

Request for Bid

Rigging Equipment - #2021-06
Bishop State Community College
351 North Broad Street
Mobile, AL 36603

Purpose: Bishop State Community College is a state supported two-year college in the Alabama Community College System. The purpose of this RFB is to identify a vendor who can provide, deliver, and install culinary equipment and train instructional staff regarding its use.

RFB Response: Please provide a complete bid response to the following 5 categories - addressing your firm's capabilities to meet the college's expectations for price, quality, and performance.

- 1) Wet-signed *formal Bid response sheet w/unit pricing* listed
- 2) Enclose 3 *references with* contact info from satisfied customers within the past year
- 3) *Confirm* that your bid price is all-inclusive (delivery, installation, basic/advanced training)
- 4) Describe *normal timelines* from order placement to shipment and payment terms
- 5) Complete all *required forms* and affidavits as noted on the RFB checklist

Formal Bid Response Sheet: The formal bid response sheet should be filled out electronically, then printed and wet-signed and included in your proposal package. When submitting your bid, please closely review the specifications listed on pages 3 thru 8 of this RFB. Please note the final total bid price shall include all costs associated as noted above. If you are proposing an equivalent to the specified items, please include a justification of equivalency.

References: Provide 3 references for us to review and contact if we have further questions.

Confirm Ability: Please review the delivery and installation terms for the equipment. The college will have all utilities in place for final hookup. However as a part of your bid, the college will expect full and professional installation and any basic or advanced training at the time of set-up.

Normal Timeframes: Explain expected order-to-ship timeframes. Discuss acceptable payment terms, ie. 30-60-90; and the process for us to set-up an account with your firm.

Required Forms: Please complete and return the RFB checklist and all properly signed and/or notarized forms and affidavits as required by the state of Alabama's laws and regulations regarding procurement with state public funds. Please review any federal guidelines that apply.



Sealed bids (only) will be received until July 22nd, 2021 at 1:00pm. At 1:30pm, the college will unseal and begin evaluation with the goal, but no guarantee, that a decision will be made the same week. As a member of the public you are invited to attend the unsealing at the address below. However no decision will be made at the public meeting.

All inquiries and questions regarding the equipment should be directed to Director Kenney Holder via email at: kholder@bishop.edu

Sealed proposals should be clearly labeled on the outside and directed to:

Bishop State Community College
Business Office
Adam Merkle, *Purchasing Agent*
SEALED #2021-06
351 N Broad Street
Mobile, AL 36603
(251) 405-7128
amerkle@bishop.edu


Specifications

Item	Qty	Description
1	1 ea	<p>INDUCTION GRIDDLE, COUNTERTOP Garland/US Range Model No. GIIC-SG3.5 Induction Instinct Griddle, countertop, single, 19.1" W x 13.5" D cooking surface, 69°-450° F temperature range, thermostatically controlled, removable grease filter, griddle plate splashguard, stainless steel construction, ETL, cETLus, CE, FCC (NET)</p> 
	1 ea	Two year on-site parts and labor warranty, covers products purchased and installed in the USA only, standard
	1 ea	208-240v/50-60/1-ph, 3.5 kW, 17 amps, cord, NEMA 6-20P and EU1-16P (US only)
ITEM		
3	1 ea	<p>CONVECTION OVEN, ELECTRIC Cadco Model No. XAFT-04FS-LD Bakerlux™ LED Heavy-Duty Convection Oven, electric, countertop, full size, (4) full size sheet pan capacity (pans not included), (4) shelves, 175-500° F temperature range, digital touch controls for time, temperature, & humidity, 10 hour timer or continuous on, (3) baking steps, saves up to (99) programs including 12 "Quick Access" programs, interior LED light, (2) automatically reversible fans, (2) fan speeds, includes electro valve for direct water connection, bottom hinged glass door, heavy-duty stainless steel construction, 208-240v/60/1-ph, 7600 watts, 32.0 amps, NEMA 6-50P, NSF, cMETus, ENERGY STAR® (can run optional proofer)</p> 
	1 ea	2 year limited warranty (1 year on-site service parts & labor, 2nd year parts only, contact factory for details), standard
	1 ea	1 year warranty on oven motors & fan, contact factory for details, standard
	1 ea	90 day warranty on light bulbs & gaskets, 30 day warranty on glass, contact factory for details, standard


ITEM

- 4 2 ea **REACH-IN REFRIGERATOR**
Delfield Model No. GAR1NP-G
Specification Line® Refrigerator, Reach-In, Narrow, one-section, 21.0 cubic feet capacity, top-mounted self-contained refrigeration system, (1) full-height hinged glass door (locking), (3) adjustable chrome wire shelves, 4.3" easyTouch® screen temperature display/control with remote monitoring, LED interior lighting, pilaster with shelf clips, stainless steel exterior front, sides & interior, (4) 5" locking casters, GreenGenius™ R290 Hydrocarbon refrigerant, 0.22 HP, 115v/60/1-ph, 4.2 amps, NEMA 5-15P, NSF, cULus, ENERGY STAR®
- 2 ea NOTE: Freight quotes are only valid from Delfield
2 ea 0460003CN 3 year parts & labor warranty, standard
2 ea W00007ACN 7 year compressor warranty, standard
2 ea Door hinged on right standard
2 ea Set of (4) 5" locking casters, standard

ITEM

- 5 1 ea **RAPID COOK OVEN**
 Merrychef USA Model No. E4
eikon™ Convection, Air Impingement and Microwave Speed Oven, ventless cooking capability, EasyTouch™ controls, USB memory, built-in diagnostic testing, bottom-hinged door, includes: (1) wire rack "DV0907", (1) cool down pan "32Z4028", (1) cleaner kit "32Z4148", (1) paddle "PSR310", (1) large mesh teflon basket "32Z4031" & (1) solid bottom teflon basket "32Z4070", stainless steel construction, 6.2kW, 208/240v/60/1-ph, 30 amp, NEMA 6-30P, CE, cULus, NSF, ETL
- 1 ea 1 year parts & labor warranty, standard
1 ea STACK-36 Single Oven Cart, 36" height, includes heavy-duty stem casters, all locking, welded undershelf, all stainless steel construction, recommended weight capacity is 250 lbs, for use with a single e4 oven

ITEM

- 6 2 ea **WORK TABLE, BAKERS TOP**
 John Boos Model No. DSS02
Work Table, baker's top, 60"W x 24"D, 1-3/4" thick top with 4" coved riser on back & both ends, Northern Hard Rock Maple, adjustable stainless steel undershelf, legs, & bullet feet, NSF, KD
- 2 ea Table comes standard with flat undershelf
2 st CAS01-R Casters, 5", heavy duty, locking, for 1-5/8" diameter legs (set of 4)

Captive-Aire Model No. 4785490

Hood #1 - Job #4785490

5430ND-2WI-PSP-FB - 5ft 0" Long Exhaust-Only Island Canopy Hood with 9" Wide Front and 9" Wide Back Perforated Supply Plenums with Built-in 3" Back Standoff and Finished back x1

- 430 SS Where Exposed x1
- Fire Cabinet on the Left Side 12.00" Width x 54" Length x 30" Height (Additional charges may apply for cabinet if not sold with fire system) x1
- FILTER - 20" tall x 16" (19.625" by 15.625") wide Stainless Steel Captrate Solo filter with hook, ETL Listed. Particulate capture efficiency: 85% efficient at 9 microns, 76% efficient at 5 microns. Used on hoods shipped AFTER 7/27/17. x3
- Recessed Allanson Round LED fixture and LED Light, 3500 K warm output. x2
- EXHAUST RISER - Factory installed 14" Diameter X 4" Height x1
- SUPPLY RISER - 6"x 28" Supply Riser with Volume Dampers x4
- 1/2 Pint Grease Cup New Style, Flanged Slotted x2
- Electrical Package Installation in Utility Cabinet by Plant. x1
- FIELD WRAPPER 18.00" High Front, Left, Right, Back x1
- FINISHED BACK- ISL/REV INSTALL 60.00" Long x1
- Parts required to mount riser sensor on riser with 3 inch insulation double wall duct. x2

Fire System #1 - Job #4785490

TANK-SP-2 Tank Fire Suppression 8 gallon Fire System in Utility Cabinet (includes pre-piped hood(s) with electric detection, tank(s), 24 VDC release mechanism, fire system agent, pressurized tanks, and electric pull station). (Formerly CAS-EWC).

Includes piping for hood: 1. x1

- Tank-based Fire Protection System equipped with Electronic Detection utilizing CORE board as a Listed Release Mechanism. Installed in Hood Utility Cabinet with integral hood prewire panel. x1
- Pressure Switch - Monitors Tank Pressure, Supervised Signal, TANK FIRE SUPPRESSION x1
- SC-EGVA2 GAS VALVE - 2" Electrical Shutoff Valve for use with HMI reset, 110V, 60Hz (#8214280). Includes upstream strainer assembly. x1

Fan #1 DU85HFA - Exhaust Fan - Job #4785490

DU85HFA High Speed Direct Drive Centrifugal Upblast Exhaust Fan with speed control (speed control included for single phase only), disconnect switch and 15-3/4" wheel.

Exhaust Fan handles 1500 CFM @ -1.350" wc ESP, Fan runs at 1415 RPM. Exhaust Motor: 0.750 HP, 3 Phs, 208 V, 60Hz, 2.6 FLA, ODP (Open Drip Proof) x1

- Grease Cup for kitchen-duty centrifugal exhaust fans, Box Dimensions 17-1/8 L X 5-1/16 W X 3-3/4 H (20 GA.) (Includes Down Spout) x1
- Full Bottom Curb Corner. Base flange corners fully welded or staked by factory. x1
- Vented Base for Curb x1
- Hinged Base for Curb. Standard Hinge attached to curb. Used on Fans

with wheels 20 inches or smaller. 12 GA Galvanized. x1
- Curb CRB23X20E On Fan #1 3.000:12.000 Pitch x1

Fan #2 A1-15D-MPU - Supply Fan - Job #4785490

A1-15D-MPU Supply Unit with 15" Mixed Flow Direct Drive Fan in Size #1 Housing Supply Fan handles 1200 CFM @ 0.500" wc ESP, Fan runs at 1381 RPM. Supply Motor: 0.750 HP, 3 Phase, 208 V, 60Hz, 2.5 FLA, ODP (Open Drip Proof) Down Discharge - Air Flow Right -> Left x1

- Sloped Filtered Intake for Size #1 Modular Untempered Supply Unit. 21.813" Wide x 44.375" Long x 23.375" High.

Includes 2" MV EZ Kleen Metal Mesh Filters. x1

- Control Package for Mod Package Unit Cooling Only Unit. Includes airflow proving switch, RTUlink-ACHP board and terminal blocks. x1

- Insulated Blower Housing Sizes 1-2 Commercial Modular x1

- 3 Ton, Single Circuit Modular Packaged Cooling Option for Size 1 Modular Packaged Unit. Includes Condenser, DX Coil, Filter/Dryer Kit, Thermal Expansion Valve, R410A Refrigerant, and Refrigerant Piping. (1,100 to 1,800 cfm) When ordered with opposite airflow condensers access and coil piping will remain in standard position. Drain and sleds will move to the opposite side. Any other change will require CLI.

CONDENSERS REQUIRE SEPARATE 208V, 3 PHASE POWER SUPPLY UNLESS ORDERED WITH SINGLE POINT CONNECTION. Coil = 2EZ1001N x1

- Separate 120VAC Wiring Package for Make-Up Air Units. Option must be selected when mounting VFD in prewire panel or with DCV package. Provides separate 120VAC input to supply fan. This 120V signal must be run by electrician from DCV to mua switch. x1

- Support shell for Size 1 Modular Package Unit. Includes control vestibule. Includes condenser supports. Does not include return air or inlet air damper. x1

- Full Bottom Curb Corner. Base flange corners fully welded or staked by factory. x1

- Curb CRB21X113X20INS Insulated On Fan #2 3.000:12.000 Pitch - Parallel to the Roof x1

Electrical System #1 - Job #4785490

SC-311110FP 3 Phase w/ control for 1 Exhaust Fan, 1 Supply Fan, Exhaust on in Fire, Lights out in Fire, Fan(s) On/Off Thermostatically Controlled. Room temperature sensor shipped loose for field installation. INVERTER DUTY 3 PHASE MOTOR REQUIRED FOR USE WITH VFD. Includes 1 Duct Thermostat kit. x1

- Digital Prewire Lighting Relay Kit. Includes hood lighting relay & terminal blocks. Allows for up to 1400W of lighting each. x1

- ESV751N02YXB571 - Variable Frequency Drive - 1 HP Max., 200/240 V, Single or Three Phase Input, 4.2 A Max., NEMA 1 Enclosure, with 2RJ-45 FOR MODBUS x1

- VERIZON CELLULAR KIT, WIRED ANTENNA AND VERIZON DATA FOR 1 YEARS. x1

- ESV751N02YXB571 - Variable Frequency Drive - 1 HP Max., 200/240 V, Single or Three Phase Input, 4.2 A Max., NEMA 1 Enclosure, with 2RJ-45 FOR MODBUS x1

Duct Run #1

- (P1) DW1447LT Single Wall Duct 14" diameter, 47" long, flange at both ends. Stainless Steel. x1
- (P2) DW1430AJDKIT Single Wall Duct Adjustable, 14" diameter, 29.5" long, flange at one end With a 14" Adjustable Collar - Stainless Steel. x1
- (P3) DW14TEASY Single Wall Duct Tee, 14" Duct, Assembly. x1
- (P4) DW1415ADKIT Duct Access Door with Handle & Grease Dam, for 14" duct use 15" door. Stainless Steel. x1
- (P5) DW1447LT Single Wall Duct 14" diameter, 47" long, flange at both ends. Stainless Steel. x1
- (P6) DW23514TP Duct to Curb Transition, 23.50" Curb to 14" Duct, 16 GA Aluminized. Misc. non-standard transition plate. x1
- 3M-2000PLUS Duct - 3M Fire Barrier 2000 Plus Silicone - Used as sealant to Seal Duct Joints. x2
- DW14CLASY Duct "V" Clamp With new design 14 Ga Brackets, 14" Duct, Assembly. x5

Factory Services

- Service Design Verification Building Surcharge x1
- Service Design Verification for CASLink. x1
- Service Design Verification for Exhaust Fan x1
- Service Design Verification for Hood x1
- Service Design Verification for Modular Package Unit x1
- Service Design Verification for Standard Electrical Control Package x1
- Service Design Verification for TANK Fire Suppression x1
- Service Design Verification for Untempered Supply Fan x1
- Service Design Verification Mileage Charge: (107.0) x 2 = 214.0 total miles x1

ITEM

-
- 8 1 ea **COUNTERTOP**
Savannah Millwork Model No. BISHOP STATE
Mobile Work Counter- to measure 50"x36"
Mobile Work Counter -to measure 48"x36"

ITEM

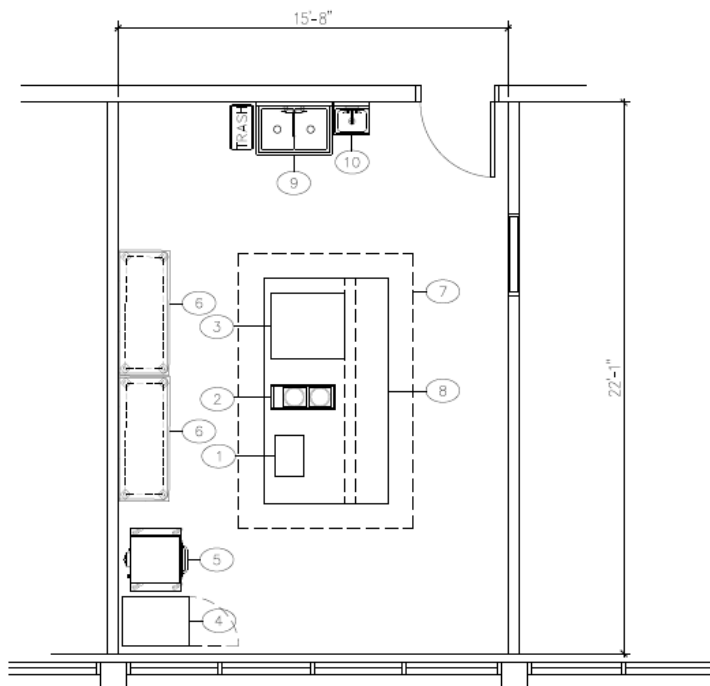
-
- 9 1 ea **TWO (2) COMPARTMENT SINK**

 John Boos Model No. 2B16204
 "B" Series Sink, 2-compartment, 37"W x 25-1/2"D x 44"H overall size, (2) 16"W x 20" front-to-back x 14" deep compartments, 10"H boxed backsplash with 45° top and 2" return, (1) set of splash mount faucet holes with 8" centers, 3-1/2" die-stamped drain openings, 16/300 stainless steel construction, stainless steel legs, adjustable side bracing, adjustable bullet feet, NSF, CSA-Sanitation
 1 ea PB-SCS1620-16/3 Sink Cover, 16" x 20", 16 ga. stainless steel
 1 ea PB-SCP1620 Poly Board / Sink Cover, 16"W x 21" front-to-back x 3/4" thick
 1 ea PB-SCH20-2 Sink Cover Storage Holder, holds (2) boards, attaches to sink legs to hold boards vertically, for polyboard sink covers

Item	Qty	Description
10	1 ea	HAND SINK John Boos Model No. PBHS-W-1410-P-SSLR-X Pro-Bowl Hand Sink, wall mount, 14"W x 10" front-to-back x 5" deep bowl, splash mount faucet holes with 4" centers, 1-7/8" drain opening with basket drain, with left & right side splashes, includes mounting bracket, all stainless steel construction, NSF, CSA-Sanitation (splash mount faucet included) (Available in Effingham and Nevada)
	1 ea	Standard flyer accessories only, NO modifications to flyer items allowed or their accessories



Basic Installation Plan Layout



EQUIPMENT SCHEDULE		
ITEM NO	QTY	EQUIPMENT CATEGORY
1	1	GRIDDLE, INDUCTION, COUNTERTOP
2	2	INDUCTION RANGE, COUNTERTOP
3	1	CONVECTION OVEN, ELECTRIC, COUNTERTOP
4	2	REFRIGERATOR, REACH-IN
5	1	RAPID COOK OVEN W/ OVEN CART
6	2	TABLE, BAKER'S W/SPLASH
7	1	EXHAUST HOOD W/ REMOTE FIRE CABINET
8	1	COUNTERTOP — MILLWORK (VERIFY DIMENSIONS)
9	1	SINK, 2-COMP
10	1	HAND SINK

***The total bid price includes all costs associated with the delivery, installation, set-up, and staff training for all equipment. The college will have all utilities in place. The winning supplier shall provide a complimentary normal set of start-up accessories.**

ADDITIONAL PROVISIONS

1. For the purpose of this RFB, the College designates a preference zone to include those entities operating within the state of Alabama.
2. The College reserves the right to accept bids in any combination, or reject any bid or part thereof and waive information that might be in the best interest of the College. The College expressly reserves the right to reject all bids if, in its sole discretion, the College believes the rejection of all bids would be in the best interests of the College.
3. After the bids are opened, all bids become the property of the College and will be made available for public inspection.
4. The proposal is to be made without connections with any other person, company, or party making a bid proposal and is to be in all respects fair and in good faith, without collusion or fraud.
5. Bishop State Community College is tax-exempt under number: 49-1557. Alabama Law (Section 41-4-116, Code of Alabama 1975) provides that every bid submitted and contract executed shall contain a certification that the vendor, contractor, and all of its affiliates that make sales for delivery into Alabama or leases for use in Alabama are registered, collecting, and remitting Alabama state and local sales, use, and/or lease tax on all taxable sales and leases into Alabama. **BY SUBMITTING THIS RFP or RFP, THE BIDDER IS HEREBY CERTIFYING THAT THEY ARE IN FULL COMPLIANCE WITH ACT NO. 2006-557.** They are not barred from bidding or entering into a contract pursuant to 41-4-116, and acknowledge that the awarding authority may declare the contract void if the certification is false.
6. Bid awards are subject to change or cancellation due to unanticipated decrease in funding (including tuition, local, state or federal). Bid awards are also subject to change or cancellation due to changes in local, state, federal laws, regulations or policies or in changes in the policies of the Alabama Community College System Board of Trustees.
7. Act 2001-955 requires the Disclosure Statement (included with this bid request) be completed and filed with all proposals, bids, contracts, or grant proposals to the State of Alabama in excess of \$5,000.00.
8. Alabama laws require that, as a condition for the award of a contract by a college to a business entity or employer with one or more employees working in Alabama, the business entity or employer must provide documentation of enrollment in the E-Verify program. During the performance of the contract, the business entity or employer shall participate in the E-Verify program and shall verify every employee that is required to be verified according to the applicable federal rules and regulations. The contractor's E-Verify Memorandum of Understanding must be

included with the bid. If you do not believe these requirements are applicable to your entity, include an explanation justifying such exemption. An entity can obtain the E-Verify Memorandum of Understanding upon completion in the E-Verify enrollment process located at the federal web site www.uscis.gov/everify. The Alabama Department of Homeland Security (<http://immigration.alabama.gov>) has also established an E-Verify employer agent account for any business entity or employer with 25 or fewer employees that will provide a participating business entity or employer with the required documentation of enrollment in the E-Verify program. An Employer Identification Number (EIN), also known as a Federal Tax Identification Number, is required to enroll in E-Verify or to establish an E-Verify employer agent account.

9. Invoicing frequency should generally be no more than once per month at the end of the billing period. Payment terms are net 30.

If Contract is awarded, the following conditions will apply and shall take precedence over any and all contrary or conflicting provisions of the agreement between the parties and shall govern the rights and obligations of the parties:

10. This agreement shall be governed by and construed in accordance with the laws of the State of Alabama without giving effect to any choice- or conflict- of- laws, provisions, or rules (whether of the State of Alabama or any other jurisdiction) that would cause the application of the laws of any jurisdiction other than those of the State of Alabama.
11. It is further agreed that the terms and commitments contained herein shall not constitute a debt of the State of Alabama in violation of Section 213 of the Constitution of Alabama of 1901, as amended by Amendment Number 26. If any provision of this agreement shall contravene any statute or constitutional provision, either now in effect or which may be enacted during the term of this agreement, then the conflicting provision of this agreement shall be deemed null and void. Vendor understands, acknowledges, and agrees that its sole and exclusive remedy for any claim which may arise from or relate to this agreement is to file a claim with the Board of Adjustment of the State of Alabama.
12. By signing this contract, the contracting parties affirm, for the duration of this agreement, that they will not violate federal immigration law or knowingly employ, hire, for employment, or continue to employ an unauthorized alien within the State of Alabama. Furthermore, a contracting party found to be in violation of this provision shall be deemed in breach of this agreement and shall be responsible for all damages resulting there from.
13. The relationship between the parties is that of independent contractors. Nothing contained herein shall be construed as creating any agency, partnership, joint

venture, or other form of joint enterprise, employment, or fiduciary relationship between the parties, and neither party shall have authority to contract for or bind the other party in any manner whatsoever.

14. This agreement constitutes the sole and entire agreement of the parties to this agreement with respect to the subject matter contained herein, and supersedes all prior and contemporaneous understandings, negotiations, and agreements, both oral and written, with respect to such subject matter.
15. In accordance with the recommendations of the Governor and the Attorney General of the State of Alabama, the parties shall consider settling all disputes arising from or related to this agreement by using appropriate forms of non-binding alternative dispute resolution.
16. In the event of proration of the fund from which payment under which this agreement is to be made, the agreement will be subject to termination.
17. This agreement may be executed in counterparts, each of which shall be deemed and original, but all of which together shall be deemed to be one and the same agreement.

Federal Funding Provisions, because a portion of funding may come from the federal government, federal contracting regulations could apply including everything listed in Appendix II to Part 200 of 2 CFR Chapter II.

18. By submitting bid or proposal, vendor agrees to comply with all federal guidelines including but not limited to:
 - a. Equal Employment Opportunity
 - b. Davis-Bacon Act, Copeland Anti-Kickback Act
 - c. Contract Work Hours and Safety Act
 - d. Rights to Inventions Made Under a Contract or Agreement
 - e. Clean Air Act and Federal Water Pollution Control Act
 - f. Energy Policy and Conservation Act
 - g. Debarment and Suspension Clauses
 - h. Byrd Anti-Lobbying Amendment