



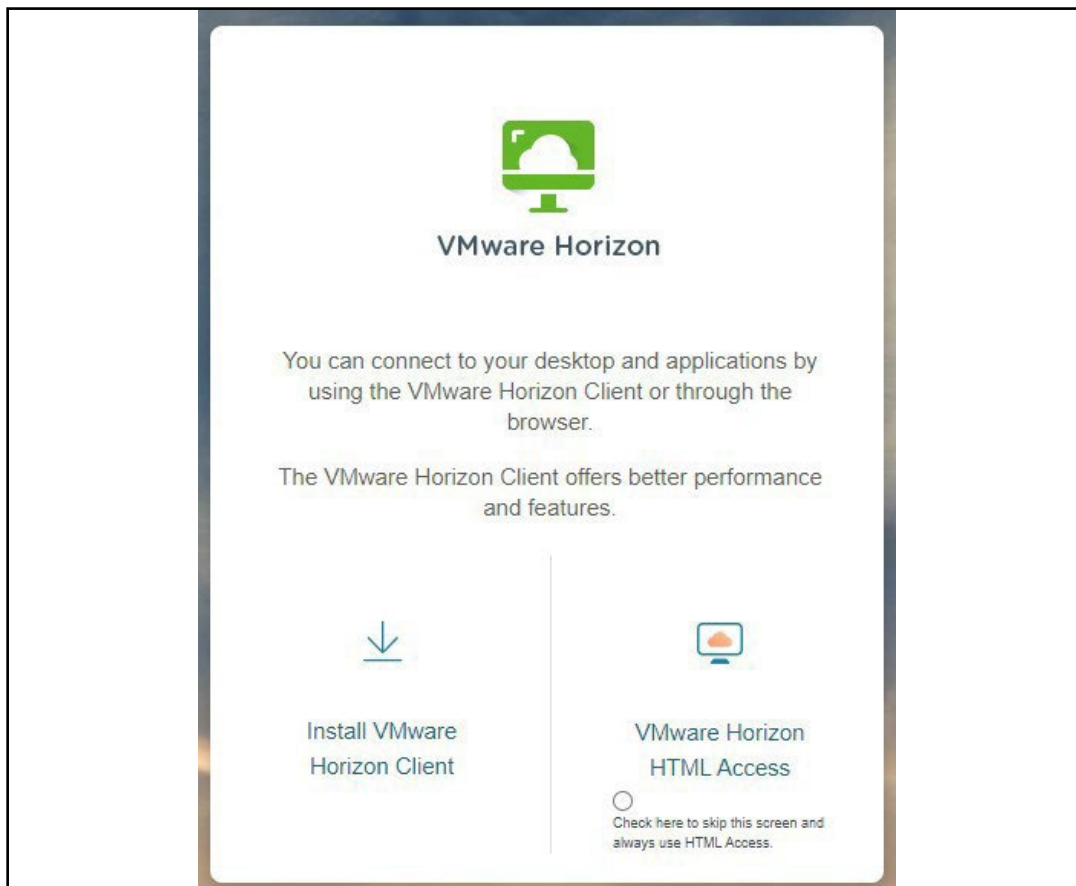
Installing and Configuring the VMWare Horizon Client on your PC or Laptop

Important:

When installing the VMware Horizon Client, you must have administrative rights to your machine in order to complete the install. You can also use VMware Horizon HTML Access as an alternative especially if you don't have admin rights to install the client.

If the client is already installed, please proceed to Step 10 to set up the connections to the Alabama.edu VDI Environment.

1. Open your preferred web browser.
2. Navigate to the VDI login page: [<https://desktop.alabama.edu>]
3. We recommend Installing the VMware Horizon Client, but you can also use VMware Horizon HTML Access as an alternative especially if you don't have admin rights to install the client.
4. Select "Install VMware Horizon Client".





- The "Install VMWare Horizon Client will take you to the Omnissa Customer Connect to download the VMWare Horizon Client. Download the the client that's specific to you local machine OS (Mac, Windows, etc).
Client Download here: https://customerconnect.omnissa.com/downloads/info/slug/desktop_end_user_computing/omnissa_horizon_clients/8
- Select "Download Now".

omnissa CUSTOMER CONNECT Products and Accounts Support Knowledge Learning Cloud Services

Home / VMware Horizon Client for Windows

Download Product

Select Version

Documentation [Release Notes](#)

Release Date 2024-04-04

Type Product Binaries

Product Resources

- [View My Download History](#)
- [Product Info](#)
- [Documentation](#)
- [Horizon Mobile Client Privacy](#)
- [Horizon Community](#)

Product Downloads Drivers & Tools Open Source Custom ISOs OEM Addons

File	Information
VMware Horizon Client for Windows	DOWNLOAD NOW
File size: 258.19 MB File type: exe Read More	

- Depending on your browser, select "Open" to run the application.

customerconnect.omnissa.com/downloads/details?downloadGroup=CART25FQ1_WIN_2312.1&productId=1027&rPid=118241

CUSTOMER CONNECT Products and Accounts Support Knowledge Learning Cloud Services

Home / VMware Horizon Client for Windows

Download Product

Select Version

Documentation [Release Notes](#)

Release Date 2024-04-04

Type Product Binaries

Product Resources

- [View My Download History](#)
- [Product Info](#)
- [Documentation](#)
- [Horizon Mobile Client Privacy](#)
- [Horizon Community](#)

Product Downloads Drivers & Tools Open Source Custom ISOs OEM Addons

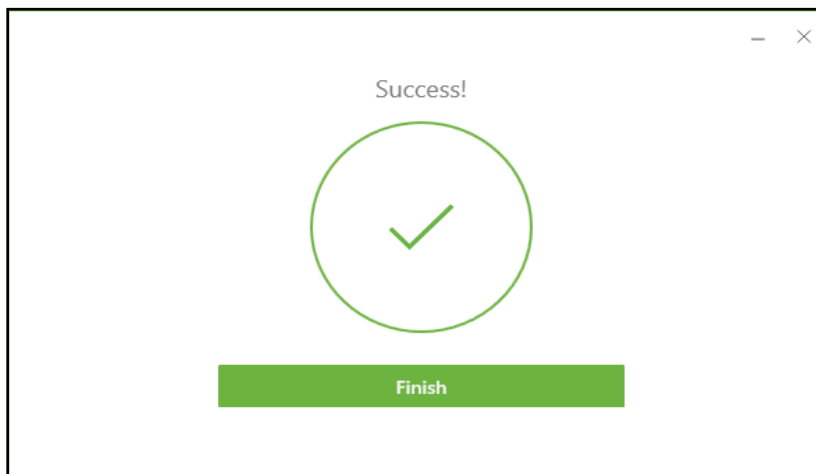
VMware-Horizon-Client-2312.1-8.12.1-23531249 (.exe)
258 MB • Done



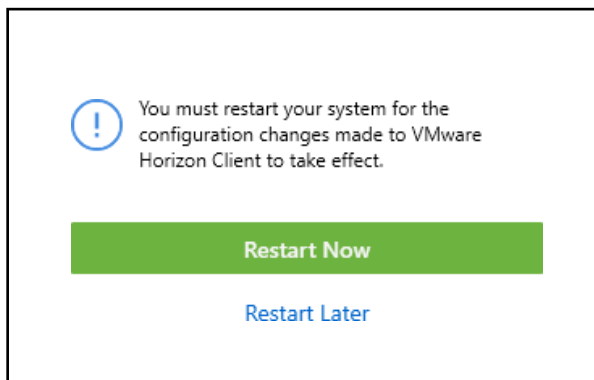
8. Select "Agree & Install".



9. Select "Finish".

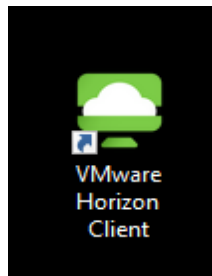


10. Select "Restart Now".

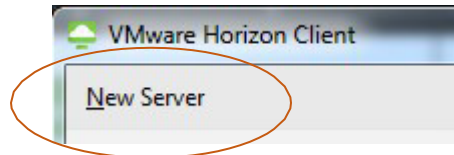




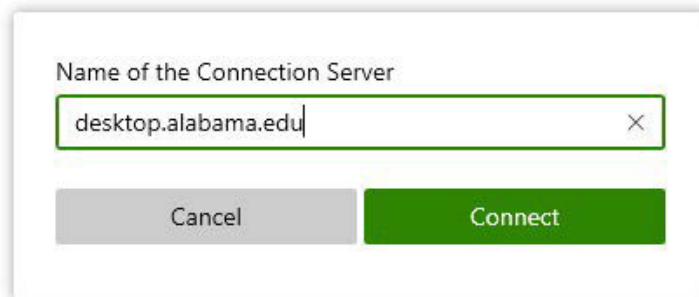
11. Once your system has restarted, you will see the VMware Horizon Client icon on your desktop.



12. Open the client by double clicking the VMWare Horizon Client on your Desktop.
13. Click "Add Server"



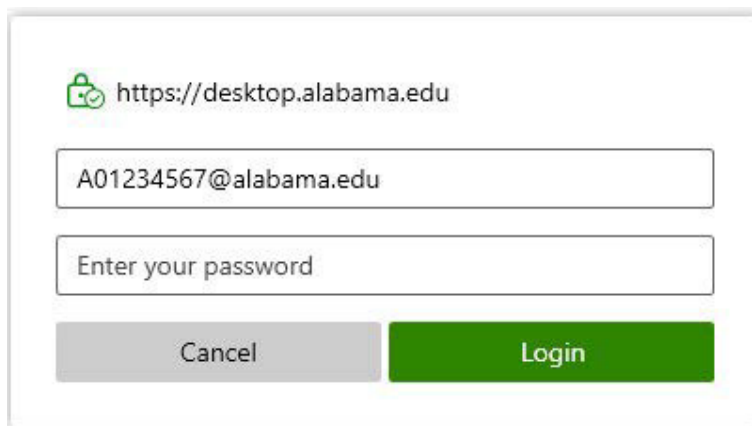
14. Enter "desktop.alabama.edu" as the connection server and select "Connect".



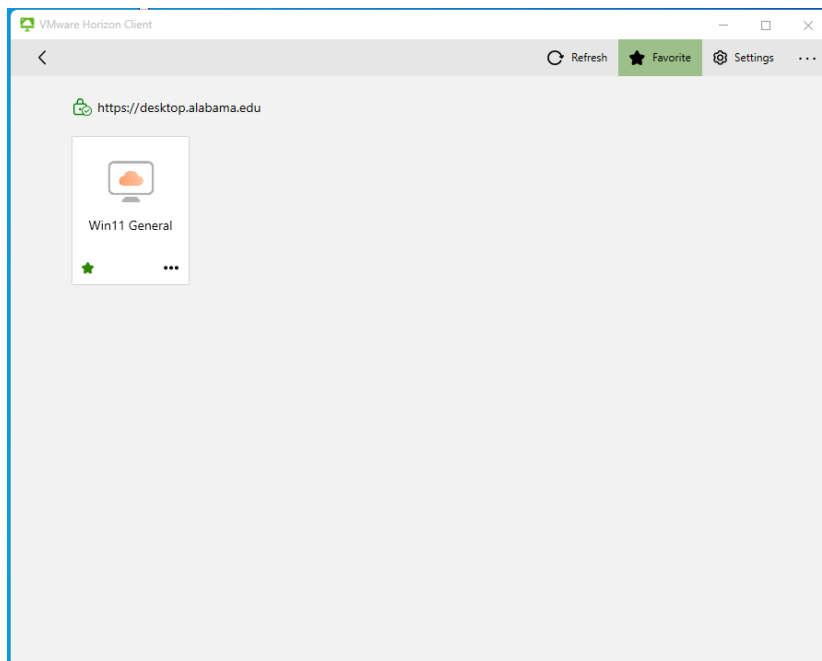
15. On the VMware Horizon Client console, select "desktop.alabama.edu"



16. Enter your "A#@alabama.edu" as your Username and enter the password for that account. Click "Login"



17. You will be presented with the Connections desktop icon. Please double-click the icon available to open the desktop. **For some users, it may skip this step and log you into the desktop directly. See step 16.**



18. This should log you into the VDI Environment where you will see your desktop.



19. Once you're logged in, please do the following to make sure your apps and logins are persistent:
- If available, launch Teams and authenticate if requested.
 - Launch Excel or Word and authenticate if requested (should not be requested again since you authenticated to Teams).
 - Launch OneDrive and authenticate if requested.
 - Launch Chrome, Edge, Firefox, or any other installed apps and make some setting changes to fit your preferences.
20. Once connected, any data saved to your OneDrive should start syncing to your VDI Desktop folders (Documents, Desktop, Photos, etc)
21. **After you're done for the day, please log off and wait about 30 seconds to a minute before logging back in.**
- **MS Office apps should work without you having to authenticate again, as the activation token should persist.**

At this stage, we would appreciate your help in testing the system to identify any additional bugs. Also, feel free to suggest any additional software you would like to have added to your virtual machine.